



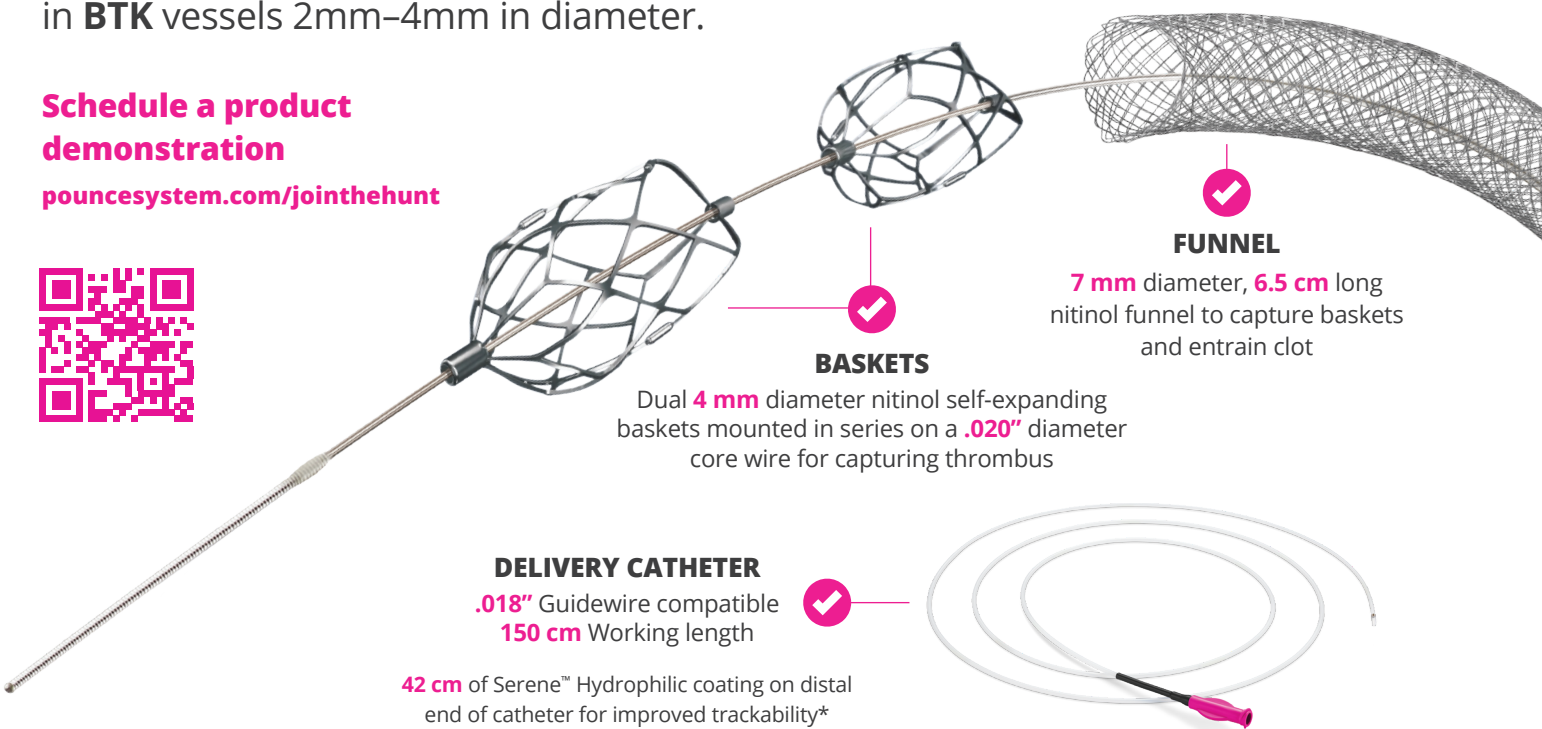
**2mm-4mm**  
VESSEL SIZE

# Capture tibial clot- *on the spot.*

**NEW!** The **Pounce™ LP Thrombectomy System** is designed to remove arterial clot in **BTK** vessels 2mm-4mm in diameter.

**Schedule a product demonstration**

[pouncesystem.com/jointhehunt](http://pouncesystem.com/jointhehunt)



**BASKETS**

Dual **4 mm** diameter nitinol self-expanding baskets mounted in series on a **.020"** diameter core wire for capturing thrombus

**FUNNEL**

**7 mm** diameter, **6.5 cm** long nitinol funnel to capture baskets and entrain clot

**DELIVERY CATHETER**

**.018"** Guidewire compatible  
**150 cm** Working length

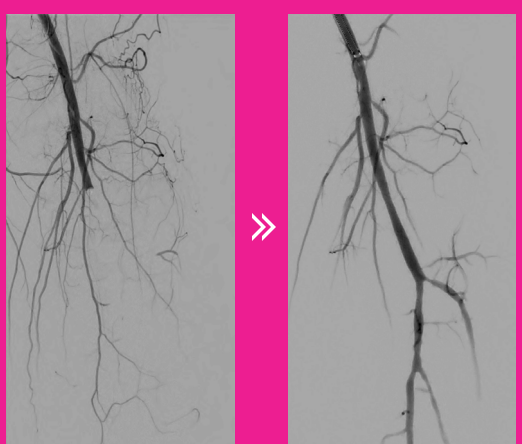
**42 cm** of Serene™ Hydrophilic coating on distal end of catheter for improved trackability\*

\*Data on file at Surmodics

## Successful Treatment of Infrapopliteal Arterial Thrombus

Lucas Ferrer Cardona, MD  
Vascular Surgeon  
Dell Seton Medical Center  
The University of Texas Hospital  
Austin, Texas

- Initial angiography showed complete thrombosis of left popliteal, TPT, and tibial arteries
- Pounce™ Thrombectomy System cleared organized clot from popliteal and TPT arteries
- **Pounce™ LP Thrombectomy System cleared subacute clot from posterior tibial and peroneal arteries, restoring flow to plantar arch**

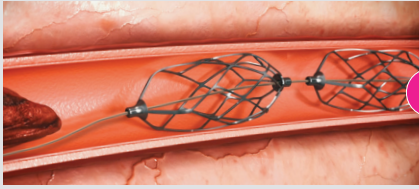


Disclosures: Dr. Ferrer Cardona is a consultant for Becton Dickinson, Penumbra, and Surmodics.

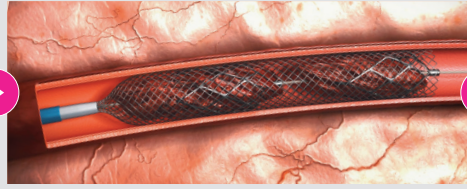


# How It Works

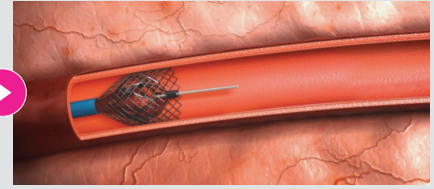
The **Pounce™ LP Thrombectomy System** is comprised of three components: a delivery catheter, a basket wire, and a funnel catheter.



The basket wire is delivered distal to the location of the thrombus, deploying two nitinol self-expanding baskets.



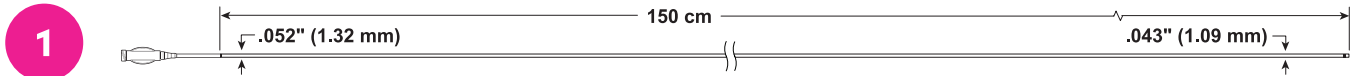
The baskets capture the clot and are retracted into a nitinol collection funnel.



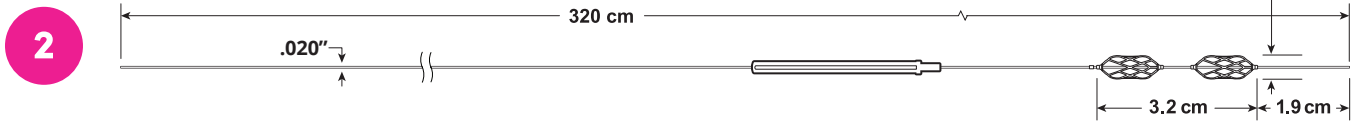
With the clot entrained, the system is retracted into a minimum 7 Fr guide sheath through which the clot is withdrawn and removed from the body.

## Product Specifications and Ordering Information

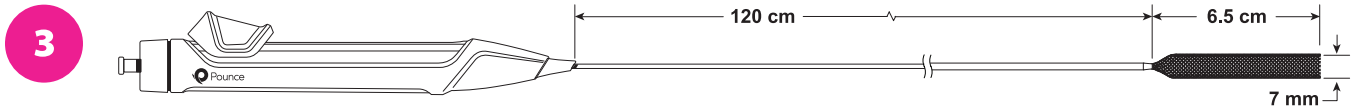
### Delivery Catheter



### Basket Wire



### Funnel Catheter



Model Number	Sheath Compatibility	Guidewire Compatibility	Working Length	Basket Diameter	Funnel Diameter
PTS-0407-7F150	≥ 7 Fr	0.018" (0.457 mm)	150 cm	4 mm	7 mm

### INDICATION FOR USE / INTENDED USE

- The Pounce Thrombectomy System is intended for the non-surgical removal of thrombi and emboli from the peripheral arterial vasculature.
- The Pounce LP Thrombectomy System is indicated for use in vessels ranging from 2 mm to 4 mm in diameter.

### CONTRAINDICATIONS

- The device is not intended for venous applications.
- The device is not intended for peripheral vasculature dilatation.
- The device is not for coronary or neurovascular use.
- The device is contraindicated for use in patients who cannot receive recommended intravenous anticoagulant therapy.
- The safety and effectiveness of the device has not been established in pediatric patients (<18 years of age).
- The device is not intended to be deployed in vessels with previously implanted devices.

**Caution:** Federal (US) law restricts these device(s) to sale by or on the order of a physician. Please refer to Instructions for Use for indications, contraindications, warnings, and precautions.



Also available, the **Pounce™ Thrombectomy System** is designed to treat peripheral arteries ranging from **3.5mm-6mm in diameter.**



**Surmodics, Inc.**  
7905 Golden Triangle Drive  
Suite 190  
Eden Prairie, MN 55344 USA  
Toll Free: 888-626-8501  
Phone: 952-500-7400  
[www.pouncesystem.com](http://www.pouncesystem.com)

SURMODICS, POUNCE, SERENE and the SURMODICS and POUNCE logos are trademarks of Surmodics Inc. and/or its affiliates.

©2024 Surmodics, Inc. All rights reserved. SRDX-PTS-828 B 04/24